

BOOTHBY PUBLIC BATHS

These Baths were built in 1901, during the administration of Mayor Frederick E. Boothby, as a health and cleanliness measure for the poor. The Baths are located in the basement of the Armory on Market Street. There are separate departments for men and women. Each person is supplied free with a fresh cake of soap and clean towel.

Number of baths taken by men, 46,818.

Number of baths taken by women, 7,464.

CIVIL SERVICE COMMISSION

The Civil Service Commission was created February 1924 in accordance with the provisions of the City Charter.

The duties of this Board is to administer the Ordinance passed by the City Council regulating the appointment, promotion, demotion, lay-off, suspension, and removal of the members of the Police and Fire Departments.

The testing program consists of a written and oral examination, and an investigation regarding fitness and character of the applicant. This procedure is constantly revised to find the best way to test an applicant's fitness for these departments.

The Commission has published a police instruction book, based upon lectures given by the superior officers of this department. Last year the Commission conducted:

Four lectures for Provisional Firemen

Examination of Patrolmen for the grade of Sargeant

Examination of Sargeants and Lieutenants for the grade of Captain

Examination for Provisional Firemen

Examination for Provisional Policemen

Examination of Provisional Firemen for the grade of regular Firemen.

Hearings were held on charges preferred against nine men suspended by the Chiefs of the Police and Fire Departments for the violation of rules and regulations of these departments.

FIRE DEPARTMENT

The service rendered by the Portland Fire Department is not limited to the extinguishment of fires. The work done in the prevention of fires is of greater importance than is that of putting the fires out after they have once started, although it does not have the "entertaining features" that a large fire affords to the general public.

The history of local protection against fire is an interesting one, dating back to 1768 when Portland was the town of Falmouth. At a town meeting on the 29th of March in that year, the people realized the necessity for some systematic protection, and they voted to appoint

fire wards, and to require every family to keep on hand a certain number of fire buckets, depending upon the size of the house and the number of fireplaces it contained.

From the time of the purchase of the first hand tub from England in 1787, which was by public subscription, up to the present time, Portland has kept abreast of the times as far as equipment is concerned.

The membership of the department has changed from the early days of the volunteers, through the period of the call department, until 1938, when the department in the city proper, became fully permanent. The last call man being retired in 1938.

Many of the early members of the fire department later gained reputations that reached far beyond the limits of the Forest City of

FIRE DEPARTMENT

*Fire Scene**Fire Boat*

Portland, and the Pine Tree State of Maine. Among the most prominent were Neal Dow, who was chief in 1839; Thomas Hammond; Nathaniel Hamblin; and others.

IMPROVEMENTS

Following the report of the survey made by the National Board of Fire Underwriters in 1928, many improvements were made. Last year, by the purchase of two motor pumpers, all of the hose companies were eliminated. This complied with practically all the recommendations incorporated in that report.

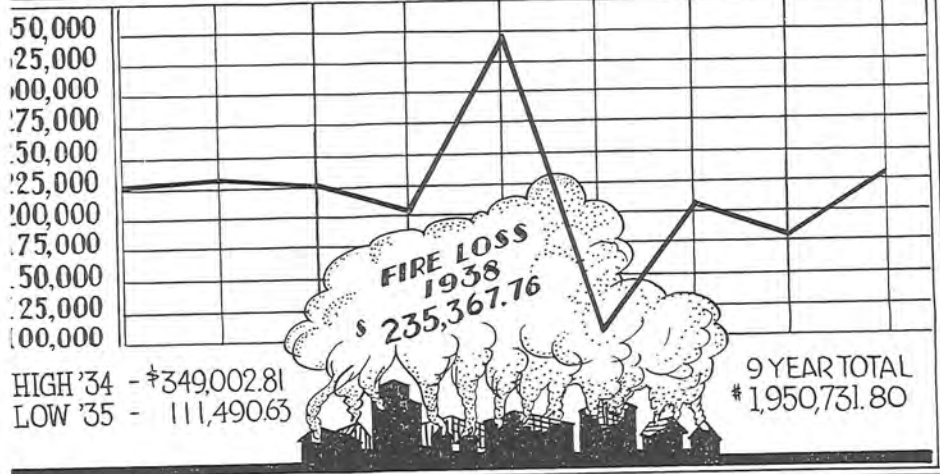
The improvements were made at a very large expense in the hopes of getting a better insurance classification, with a resulting lower rate. With that in mind, another survey was made during the year 1938. We now find that for an additional outlay, small compared to that already made, the city will receive an "A" rating.

FIRE RECORD

Of the 1,098 alarms received in 1938, but 103 were for actual building fires. The loss for the year amounted to \$235,367.76, over 66% of which resulted from two fires—one, the coal pocket fire on the water front, and the other, a grain mill at Morrill's Corner.

Many people, no doubt, may wonder whether or not the large expenditures for improving the department have been justified. A comparison of the fire losses shows that the average loss for the fifteen

1930 1931 1932 1933 1934 1935 1936 1937 1938

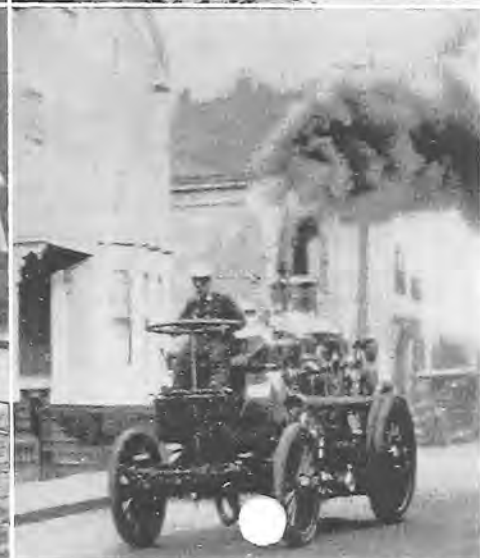
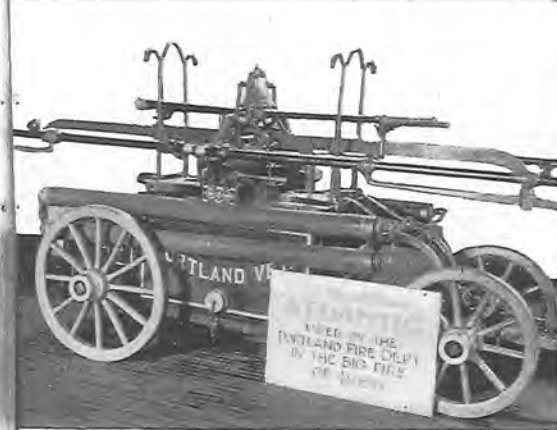


FIRE DEPARTMENT

Hand Tub
Horsedrawn

Modern Gasoline Pumper

First Steam Fire Engine in Portland
Horseless



year period from 1919-1933 was \$330,670.32. The average loss for the past five years has been but \$218,178.78, showing an average yearly reduction of \$112,491.54.

If advantage is taken of the opportunity to advance to the Class A rating, there would be a saving through reduced insurance rates of at least \$40,000.00 a year to our property owners. In addition with better fire protection a further saving in fire losses of at least \$20,000.00 a year.

PERSONNEL AND TRAINING

The department consists of 119 permanent members, and one civilian mechanic.

The public in general little realizes the duties of a fireman, and the great amount of training and study that is necessary in order to obtain the required efficiency.

The drill school is in operation from June 1st to October 1st, and all the men are required to attend, going through the various evolutions with ladders, hose lines, and other equipment.

During the winter months a school is held for the officers, also classes in first aid and life saving.

FIRE PREVENTION

Inspection of buildings for the prevention of fire is being carried on constantly.

Extra efforts in the prevention of fires and the education of the public are put forth during fire prevention week.

Every night men are detailed for theatre inspection. At all other times whenever there is a large gathering of people, such as the Automobile Show, Food Show, etc., firemen are assigned to protect the public. In fact, on any occasion where there is a possibility of a life hazard existing, firemen are always on the job to guard the safety of the public.

During the Christmas season, men are detailed to the shopping district to make more frequent inspection of stores, as excelsior, paper wrappings and other rubbish are likely to accumulate.

CONCLUSION

The firemen of the City of Portland, from the head to the youngest probationer, are interested in their duties of protecting the lives and property of the citizens of Portland. Their services, not alone, for fire extinguishment, but for advice regarding fire hazards, saving the lives of people who are in danger, first aid work, and many other duties too numerous to mention, are always available.

Fire Department

PORTLAND

Headquarters, Central Fire Station, 380 Congress

BOARD OF ENGINEERS

Oliver T. Sanborn, chief engineer; Aldon H. Moulton, deputy chief; William R. Read, district chief; Frank P. Carr, unattached capt.

FIRE ALARM—118 Federal. Frederick W. Barnes, supt.

ENGINE 1—380 Congress. Charles F. Feeney, capt.

ENGINE 2—134 Congress. Joseph L. Blake, capt.

ENGINE 3—176 Brackett. Thomas A. Mulhern, capt.

ENGINE 4—157 Spring. Thomas S. Murdock, capt.

ENGINE 5—380 Congress. Frank J. Mullus, capt.

ENGINE 6—295 Park av. William F. Moulton, capt.

ENGINE 7 (Fire Boat)—60 Portland Pier. Thomas A. Burgess, capt.

ENGINE 8—536 Deering av. Frederick C. Larson, capt.

ENGINE 9—9-11 Arbor. George W. I. Stevens, Stephen A. Dow, capt.

CHEMICAL 1—380 Congress. Arthur J. Murdock, capt.

LADDER 1—380 CONGRESS. Harry W. Marr, capt.

LADDER 3—163 Brackett. John H. Mullus, capt.

LADDER 4—9-11 Arbor. Leslie R. MacVane, capt.

LADDER 5—380 Congress. Dwight F. Tinkham, capt.

LADDER 6—295 Park av. Elmer E. Freeman, capt.

HOSE 11—570 Ocean av. Michael J. Carlson, capt.

HOSE 12—Peaks Island. William S. Berry, capt.

Portland Fire Alarm Boxes

131 Wash. av. and Veranda
132 Presumpscot, near True
133 Olympia and Veranda
134 Wash. and Ocean avs.
135 Wash. av. and Ray
136 Wash. av. near Riverside school
137 Wash. and Allen avs.
138 Allen av. n. Col. Moore's
139 Auburn, near Lambert
141 Veranda, near G. T. R. bridge
142 Wash. av. and Presumpscot
145 Ocean av. and Codman
146 Ocean av. and Rosedale
151 Ocean av. and George
152 Ocean av. and Sawyer
153 Wash. av. and Inverness
154 Portland Rendering Co.
155 Ocean av. and Read
156 Ocean av. near True
157 Edgewood and Washington av.
158 Wash. av. and Fall Brook
159 Presumpscot and St. Charles
161 Windsor and Kensington
162 Huntington av. and Van Vetchen
163 Ray and Idaho
164 Maine av. and Ray
165 Allen av. and Ray
166 Jackson and Summit
167 235 Auburn
168 Wash. and Highland avs.

21 Vesper and East'n prom
23 Wilson and Munjoy
24 Fore and Waterville
25 Engine house, head North

20 Adams and Mountfort
27 India and Commercial
28 Congress and India
29 Franklin Wharf & Coml.
211 Moody and East. prom.
212 Congress and Vesper
213 Sheridan and Monument
214 Newbury and India
231 St. Lawrence & Gilbert lane
232 Monument and Atlantic
241 Fore and Mountfort
242 Portland Co. (private)
261 Congress and Mountfort

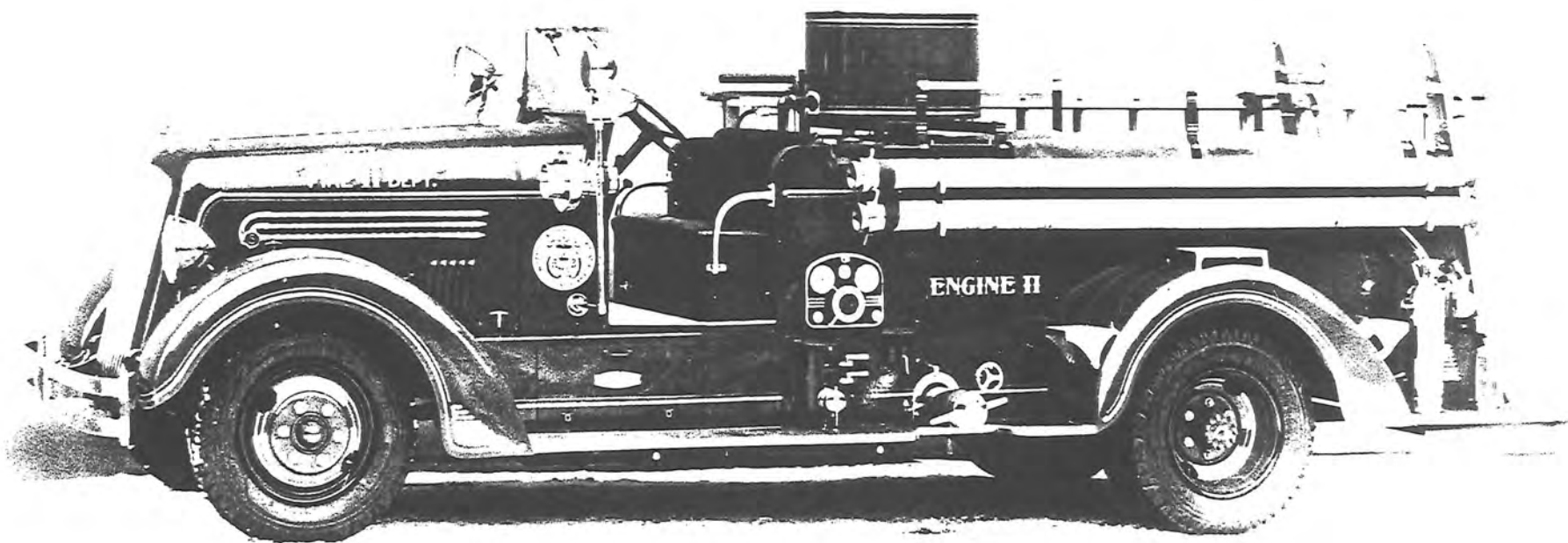
31 Mayo and Oxford
32 Wilmot and Cumb. av.
33 No School
34 Lancaster and Pearl
35 Oxford and Chestnut
36 Preble and Oxford
37 Elm and Cumb. av.
312 Lancaster and Franklin
313 Anderson and Lancaster
314 Cumb. av. and Myrtle
315 Anderson and Cumb. av.
316 Cumb. av. and Sheridan
317 Wash. av. and Eastern prom.
318 Emerson and Melbourne
321 Howard and Turner
322 Merrill and Quebec
323 North and Montreal
324 Wash. av. and Oxford
325 Fox and Hammond
326 Franklin and Fox

4 Middle and Franklin
41 Fore and Custom House
42 Pearl, opp. Milk
43 Market and Commercial
44 Middle and Plum

45 Middle and Exchange
46 Central Fire Sta. Cong.
47 Federal and Temple
48 Franklin and Congress
412 Union and Fore
413 Middle and Free
414 Commercial and Center
415 Fore and Center
421 Church and Newbury
423 Market and Newbury
424 Elec. App. Bldg., Federal
425 Federal and Pearl
441 Palmouth Hotel
443 Commercial and Plum
451 Fore and Dana

6 Congress, opp. Preble
51 Kennebec and Preble
52 Portland and Parris
53 Congress near Oak
54 Cumb. and Forest avs.
55 Forest av. and Park av.
56 Forest av. and Kennebec
57 High and Grant
58 Deering and Henry
59 Brown and Free
512 Congress and Pine
513 Cumb. av. and State
514 Congress and Walker
515 Mellen and Sherman
518 Park av. and State
519 Deering av. and Grant
521 Cumb. av. and Casco
522 Hanover and Lancaster
531 Congress and Brown

6 South and Spring
61 York and Maple
62 High and Danforth
63 Engine 4 House, Spring near State
64 Commercial and Park

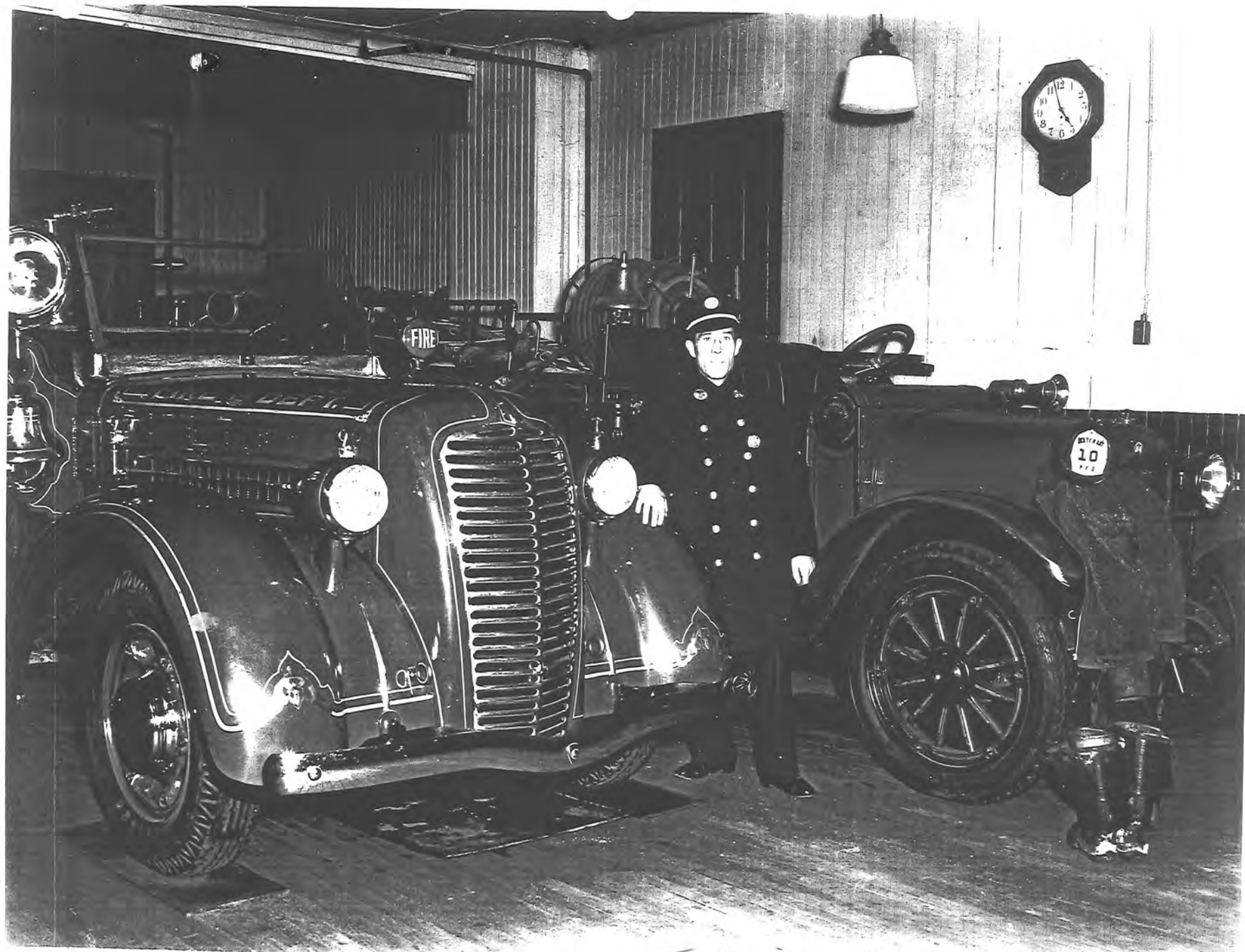


1938 SEAGRAVE 500 GPM PUMPER FOR ENGINE 11
IN COMMISSION MARCH 2, 1938



LADDER 6 TRAILER RETROFITTED w/NEW 85-FOOT 3-SECTION STEEL AERIAL
ALSO WITH ALUMINUM LADDERS (OLD 1929 75-FOOT WOODEN AERIAL FITTED ON L5)

TO SEAGRAVE 2/12/38 → BACK IN SERVICE MAY 12, 1938



1938 McCANN/DIAMOND T 500 GPM PUMPER
IN COMMISSION AS ENGINE 12, PEAKS IS. NOV. 7, 1938
(NEXT TO OLD 1921 HOSE 12)