

1937

FIRE DEPARTMENT

The Portland Fire Department consists of 17 fire companies including 120 men, 11 fire stations, 29 pieces of apparatus in active duty, 18 pieces of apparatus in reserve, one fire boat and one repair shop.

FIRE LOSSES

The fire losses of 1937 amounted to \$185,181.19, making the fourth time in the past ten years in which the figure has been under the \$200,000 mark. This is a decrease of \$24,771 or 11.3% compared with 1936. The fire loss per capita was \$2.42.

FIRE PREVENTION

The department has continued its drive upon fire hazards. A total of 14,058 inspections were made as compared with 11,773 during 1936. A fire prevention school for janitors, watchmen, and building superintendents was held for instruction in fire hazards.

An effort is being made to have removed and demolished all unoccupied and unsightly buildings in the city which act as fire-breeders and nuisances to adjacent property.

TRAINING

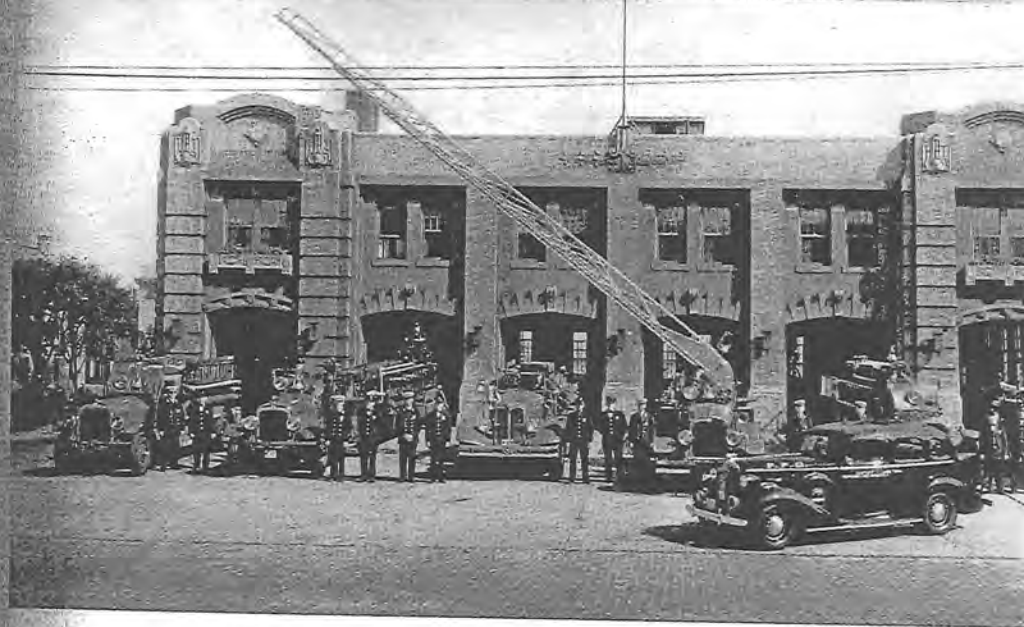
The regular drill school was in session at the tower from May to October. Instruction was given in fire fighting, drill in fire fighting, first aid, and ladder work. A program of education on matters pertaining to fire prevention, accident prevention, life saving, and first aid was carried on. Twenty-six first aid and rescue calls were answered consisting of drowning, heart attacks, burns, suicide, and gas poisoning.

A 1,250 gallon triple combination motor pumper was purchased. Orders were placed for two 500 gallon triple combination pumpers for Engine 11 and Engine 12. Engines 3 and 9 were changed from a combination hose and pumper to triple combination by the addition of booster equipment.

CAUSES OF FIRE

The following fires have caused most of the alarms during the past year:—

Automobiles	80	Spontaneous Combustion	17
Grass	62	Careless Smokers	19
Dumps	37	Overheated Stoves	8
Fireworks	6	Overheated Furnaces	3
Incendiary	2	Overheated Chimneys	2
Oil Stoves	14	Overheated Tar	4
Rubbish	9	Overheated Boilers	1
Sparks	27	Overheated Fat	1
Short Circuit	13	Unknown	77
Painters' Torch	7	False	47
Gasoline	2	Needless	212



Fire Department in Action

New Pumper Hose 11

New Pumper Engine 5

Fire Boat

Central Fire Station and Apparatus

# Fire Department

## PORTLAND

Headquarters, Central Fire Station, 380 Congress

### BOARD OF ENGINEERS

Oliver T. Sanborn, chief engineer; Albion H. Moulton, deputy chief; William R. Read, district chief; Frank P. Carr, unattached capt.

**FIRE ALARM**—118 Federal. Frederick W. Barnes, supt.

**ENGINE 1**—380 Congress. Charles F. Feeney, capt.

**ENGINE 2**—134 Congress. Joseph L. Blake, capt.

**ENGINE 3**—176 Brackett. Michael J. Carlson, capt.

**ENGINE 4**—157 Spring. Thomas S. Murock, capt.

**ENGINE 5**—380 Congress. Frank J. Mullins, capt.

**ENGINE 6**—205 Park av. William F. Moulton, capt.

**ENGINE 7 (Fire Boat)**—60 Portland Pier. Thomas A. Burgess, capt.

**ENGINE 8**—536 Deering av. Amos B. Knight, capt.

**ENGINE 9**—0-11 Arbor. George W. Stevens, capt.

**CHEMICAL 1**—380 Congress. Stephen A. Dow, capt.

**LADDER 1**—380 Congress. Leslie B. MacVane, capt.

**LADDER 3**—163 Brackett. John H. Mullus, capt.

**LADDER 4**—0-11 Arbor. Frederick C. Larsen, capt.

**LADDER 5**—380 Congress. Dwight B. Tinkham, capt.

**LADDER 6**—205 Park av. Thomas A. Mulhern, capt.

**HOSE 11**—579 Ocean av. Joseph L. Cooper, capt.

**HOSE 12**—Peaks Island. William Berry, capt.

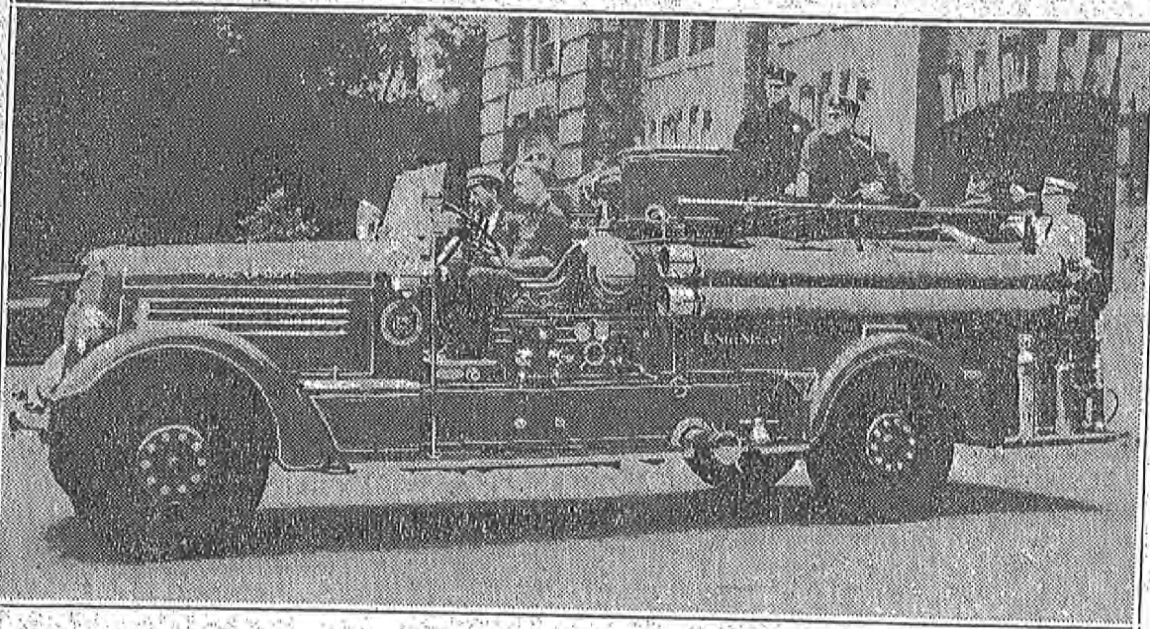
## Portland Fire Alarm Boxes

- |                                     |                                 |                                      |
|-------------------------------------|---------------------------------|--------------------------------------|
| 131 Wash. av. and Veranda           | 28 Adams and Mountfort          | 45 Middle and Exchange               |
| 132 Presumpscot near True           | 27 India and Commercial         | 46 Central Fire Sta, Cong            |
| 133 Olympia and Veranda             | 28 Congress and India           | 47 Federal and Temple                |
| 134 Wash. and Ocean avs.            | 29 Franklin Wharf & Coml.       | 48 Franklin and Congress             |
| 135 Wash. av. and Ray               | 211 Moody and East, prom.       | 412 Union and Fore                   |
| 136 Wash. av. near Riverside school | 212 Congress and Vesper         | 413 Middle and Free                  |
| 137 Wash. and Allen avs.            | 213 Sheridan and Monument       | 414 Commercial and Center            |
| 138 Allen av. n. Col. Moore's       | 214 Newbury and India           | 415 Fore and Center                  |
| 139 Auburn, near Lambert            | 231 St. Lawrence & Gilbert Jane | 421 Church and Newbury               |
| 141 Veranda, near G. T. R. bridge   | 232 Monument and Atlantic       | 423 Market and Newbury               |
| 142 Wash. av. and Presumpscot       | 241 Fore and Mountfort          | 424 Elec. App. Bldg., Federal        |
| 145 Ocean av. and Codman            | 242 Portland Co. (private)      | 425 Federal and Pearl                |
| 146 Ocean av. and Rosedale          | 261 Congress and Mountfort      | 441 Falmouth Hotel                   |
| 151 Ocean av. and George            | 31 Mayo and Oxford              | 443 Commercial and Plum              |
| 152 Ocean av. and Sawyer            | 32 Willnot and Cumb. av.        | 451 Fore and Dana                    |
| 153 Wash. av. and Inverness         | 33 No School                    | 5 Congress, opp. Preble              |
| 154 Portland Rendering Co.          | 34 Lancaster and Pearl          | 51 Kennebec and Preble               |
| 155 Ocean av. and Read              | 35 Oxford and Chestnut          | 52 Portland and Ennis                |
| 156 Ocean av. near True             | 36 Preble and Oxford            | 53 Congress cor. Oak                 |
| 157 Edgewood and Washington av.     | 37 Elm and Cumb. av.            | 54 Cumb. and Forest avs.             |
| 158 Wash. av. and Fall Brook        | 312 Lancaster and Franklin      | 55 Forest av. and Portland           |
| 159 Presumpscot and St. Charles     | 313 Anderson and Lancaster      | 56 Forest av. and Kennebec           |
| 161 Windsor and Kensington          | 314 Cumb. av. and Myrtle        | 57 High and Grant                    |
| 162 Huntington av. and Van Vetchen  | 315 Anderson and Cumb. av.      | 58 Deering and Henry                 |
| 163 Ray and Idaho                   | 316 Cumb. av. and Sheridan      | 59 Brown and Free                    |
| 164 Maine av. and Ray               | 317 Wash. av. and Eastern prom. | 512 Congress and Pine                |
| 165 Allen av. and Ray               | 318 Emerson and Melbourne       | 513 Cumb. av. and State              |
| 166 Jackson and Summit              | 321 Howard and Turner           | 514 Congress and Walker              |
| 167 235 Auburn                      | 322 Merrill and Quebec          | 515 Mellen and Sherman               |
| 168 Wash. and Highland avs.         | 323 North and Montreal          | 518 Park av. and State               |
| 21 Vesper and East'n prom           | 324 Wash. av. and Oxford        | 519 Deering av. and Grant            |
| 23 Wilson and Munjoy                | 325 Fox and Hammond             | 521 Cumb. av. and Casco              |
| 24 Fore and Waterville              | 326 Franklin and Fox            | 522 Hanover and Lancaster            |
| 25 Engine house, head North         | 4 Middle and Franklin           | 531 Congress and Brown               |
|                                     | 41 Fore and Custom House        | 6 South and Spring                   |
|                                     | 42 Pearl, opp. Milk             | 61 York and Maple                    |
|                                     | 43 Market and Commercial        | 62 High and Danforth                 |
|                                     | 44 Middle and Plum              | 63 Engine 4 House, Spring near State |
|                                     |                                 | 64 Commercial and Park               |



Portland Evening Express, Thursday, July 15, 1937

## Portland's Largest Pumper Goes Into Service



By Staff Photographer

The new Engine 5, accepted today from the Seagrave Company of Columbus, Ohio, as the newest part of Portland's fire-fighting forces. The V-12 pumper, with a capacity of 1,250 gallons a minute is the largest pumper ever connected with the local fire department. It is stationed at the Central Fire Station while the old Engine 5 has been transferred to the Arbor Street Station.